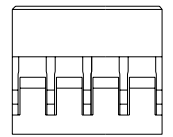
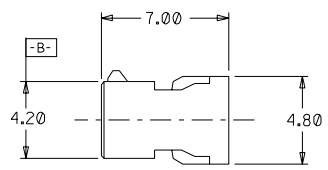
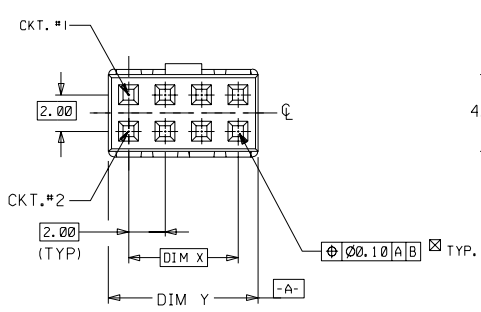
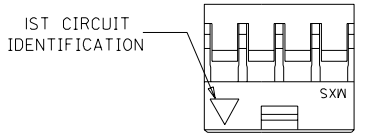


| PART NUMBER | CKT SIZE | DIM X | DIM Y |
|-------------|----------|-------|-------|
| 51110-0460 | 4 | 2.00 | 4.20 |
| 51110-0660 | 6 | 4.00 | 6.20 |
| 51110-0860 | 8 | 6.00 | 8.20 |
| 51110-1060 | 10 | 8.00 | 10.20 |
| 51110-1260 | 12 | 10.00 | 12.20 |

DWG. NO. SD 51110-***60
 CAD FILE S5111060.DGN



LEGEND:

51110 - ***60
 └───┬───┘
 CKT SIZE

NOTES:

- FOR ILLUSTRATION PURPOSES, 8 CKT SIZE HSG. IS SHOWN.
- PARTS TO BE USED WITH CRIMP TERMINAL PART NUMBER 50394-8***.
- APPLICABLE WIRE RANGE : AWG #24 - #30.
- WIRE INSULATION RANGE : DIAMETER 1.40MM MAXIMUM.

MM

DO NOT SCALE DRAWING

| | | | | | | | | | |
|---------------------------|------------------------|--------|----------|------------|------|---------------------------------------------------------|------------------|--------------------------------------------------------|-------|
| | | | | MATERIAL : | | GLASS-FILLED POLYESTER UL RATED 94V-0 COLOR BLACK | | MOLEX SINGAPORE PTE LTD SHEET OF | |
| | | | | FINISH : | | | | | |
| A | REL PER PDR*95-04-0029 | S60074 | SEE JACK | 950815 | | | DWG. NO.: | | REV A |
| I | PROPOSAL ONLY | | | 950522 | | | SD 51110-***60 | | |
| LTR | REVISION RECORD | ECN | DR | CHK | DATE | DRAWN BY SEE 950815 | CHK'D BY | TITLE : | |
| REVISE ONLY ON CAD SYSTEM | | | | | | APPR'D BY | SCALE 4 : 1 | 2MM GRID, WIRE-TO-BOARD CONN. CRIMP RECEPTACLE HSG. | |